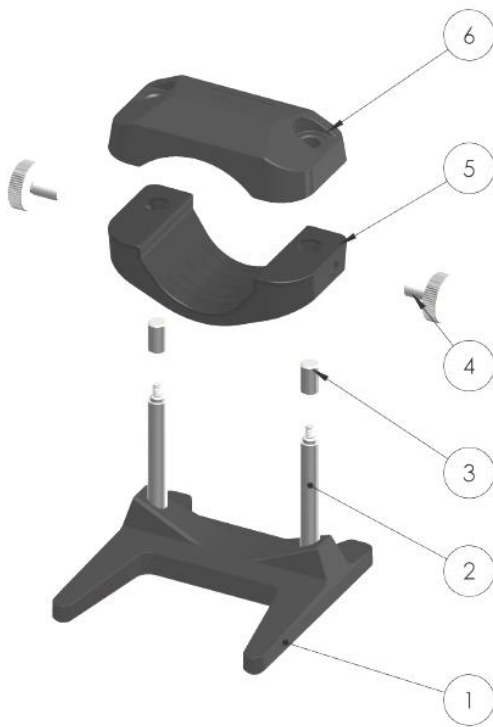




High End Performance Connector & Cable Elevator NCF Booster

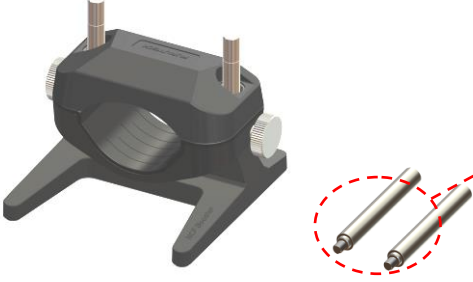
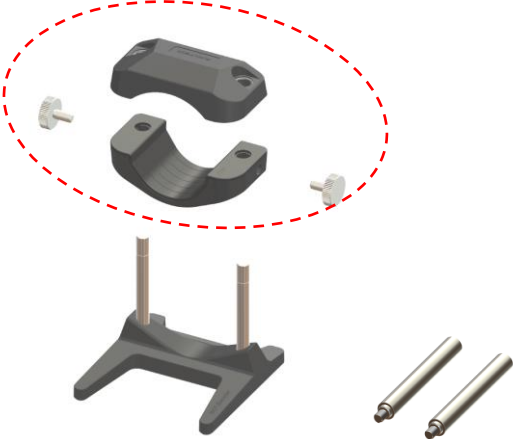
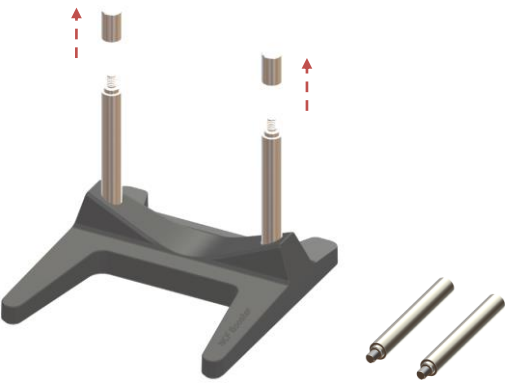
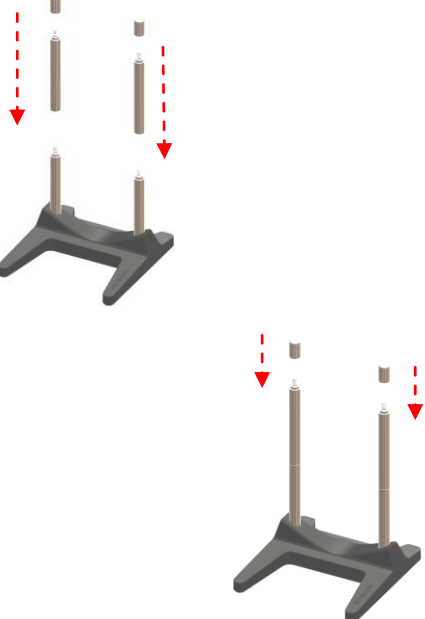
Multi-material Hybrid Construction – Furutech Design

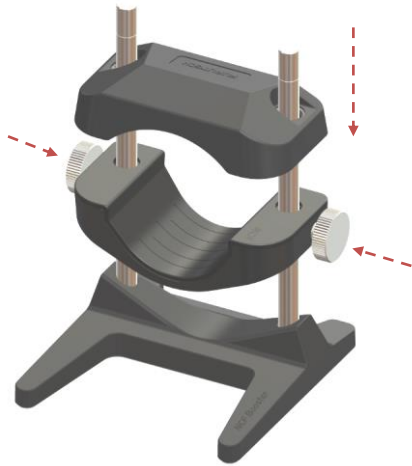
**---For the Ultimate Connector and Cable Damping
Solution**

Construction and Part names:

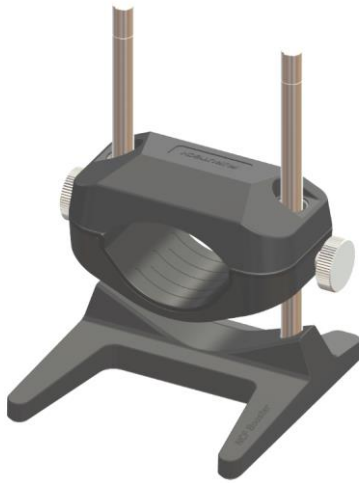


No.	Part names
1	Base Unit
2	Shaft Bar
3	Shaft Bar Caps
4	Support Fixed screws
5	Support Unit
6	Top Clamp Unit
Accessories	
	Shaft bar (2 PCS)
	Silicone damping ring (2 PCS)

Shaft bar replacement process	
	<p>An additional set of Shaft bars is supplied with the NCF Booster.</p>
	<p>Remove the Top Clamp Unit and loosen support clamp fixed screws and then remove Support Clamp Unit.</p>
	<p>Loosen and remove the two caps from the shaft bars.</p>
	<p>Screw on additional shaft bars and caps.</p>

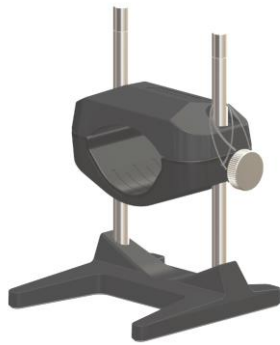


Reset the Support Clamp Unit and tighten the fixed screws. Set the Top Clamp Unit on to the Shaft bars.



Finished.

Silicone damping ring setting explanation and image

	Put silicone damping ring over the shaft.
	Pull the Silicone damping ring over the shaft bar and around the Support Clamp fixed screw.
	And then loop back over the Shaft bar.

Usage examples for reference



Pre. AMP. & Power AMP.



Power Distributor & Wall Receptacle



Speaker Cable