

FURUTECH

www.furutech.com

(NEW ITEM) 2005



FI-33 (R) Rhodium Plated

FI-33 (G) 24k Gold Plated

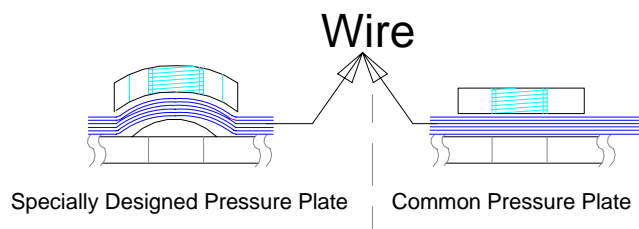
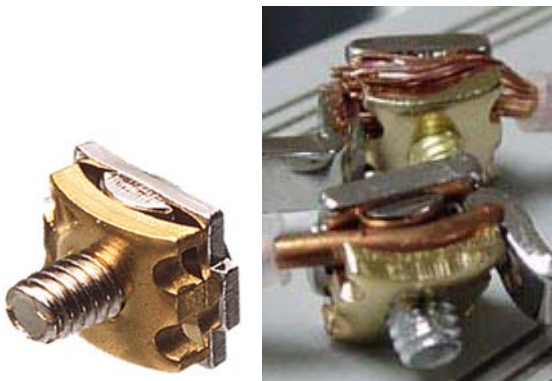
High End Performance AC INLET 20A 125V/16A 250V A.C.

FI- 33 (G)/(R) 24k Gold Plated/ Rhodium Plated

Type: 2-pole+earth

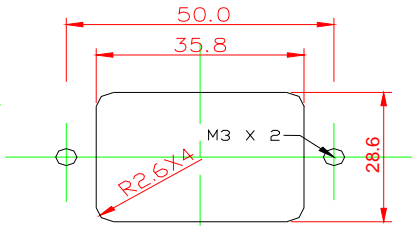
Rating: 20A 125V A.C. /16A 250V A.C.

- Pure copper α (Alpha) Conductor
- Material: Nylon/fiberglass
- Specified for wire diameters of 4mm (set screw)
- Dimensions: 60.4mm (W) x 30.4mm (D) x 38.7mm(H)
- Furutech's total attention to detail and build quality extends right down to a specially designed patent-pending pressure plate (see below) that increases the contact area of the Alpha Conductors.

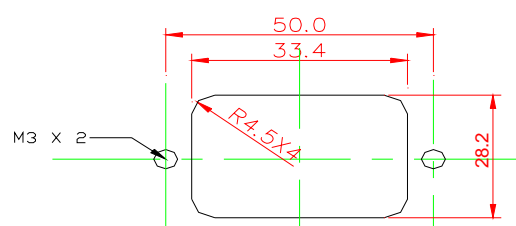


Panel Cut-out Size for A.C. Inlet

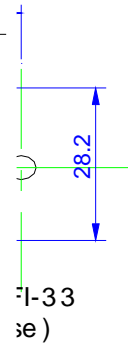
Panel Cut-out Size for A.C. Inlet



Panel Cut-out Size for FI-33
(for Rear mounting Use)



Panel Cut-out Size for FI-33
(for Front mounting Use)



All metallic parts are treated with the
***FURUTECH α** (Alpha) Process (Super Cryogenic & Demagnetizing Treatment.)

FURUTECH CO., LTD.
service@furutech.com

Make A More Powerful Connection with Furutech!