

# FURUTECH

PURE TRANSMISSION

# AEx

オーディオ銘機賞  
Audio Excellence Award 2008



High

## End Performance EMI Filter Inlet AC-1501 series



AC-1501(R)



AC-1501(G)

### Features:

Rhodium plated or 24k gold plated  $\alpha$  (Alpha) non-magnetic copper alloy conductors

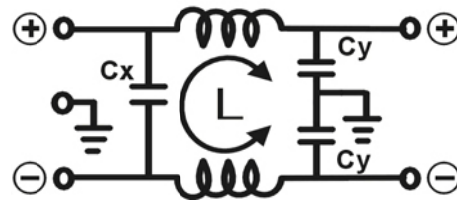
Outer cover- Cr Plated steel plate

Inner cover- Nylon glass fiber

Inner Box- Nylon glass fiber

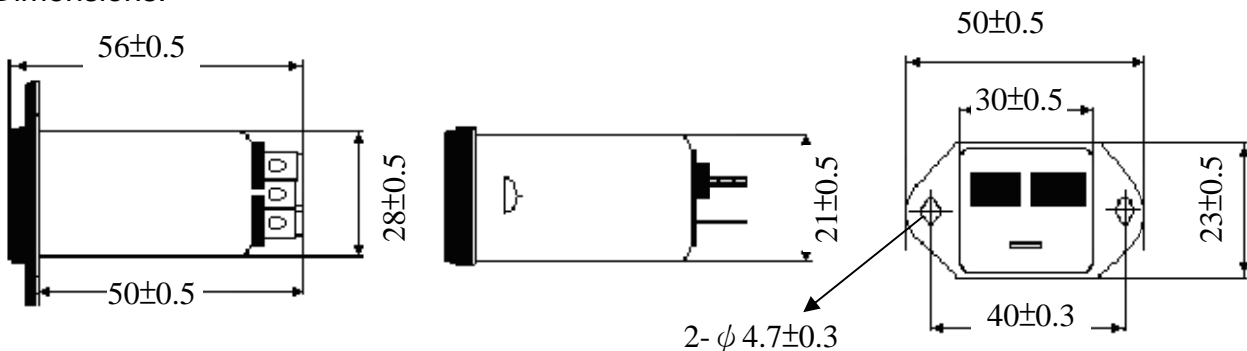
Inner parts held by Piezo Epoxy

Rating: 115V/250V 15A 50/60Hz



L:0.2mH Cx:0.1uF Cy:2200pF×2

### Dimensions:



All metallic parts are treated with the

\*FURUTECH  $\alpha$  (Alpha) Process (Super Cryogenic & Demagnetizing Treatment.)

FURUTECH CO., LTD.  
service@furutech.com

Make A More Powerful Connection with Furutech!